

RECORDED JUN 16 1995 AT 3:17 P.M.
 REGISTRATION NO. 163825 LARAMIE COUNTY WY

State of Wyoming Corner Record

(In compliance with the CORNER PERPETUATION AND FILING ACT, Wyoming Statutes, 1977, Section 36-11-101, et. seq., and the Rules and Regulations of the Board of Registration for Professional Engineers and Professional Land Surveyors)

Reverse side of this form may be used if more space is needed.

Record of original survey and citation of source of historical information (if corner is lost or obliterated). Description of corner monumentation evidence found and/or monument and accessories established to perpetuate the location of this corner. Sketch of relative location of monument, accessories, and reference points with course and distance to adjacent corner(s) (if determined in this survey). Method and rationale for reestablishment of lost or obliterated corner.

NO EVIDENCE FOUND

Set 3 1/4' aluminum cap on #5 rebar 24" long. Corner sets 10" below road surface.

No reference points set.

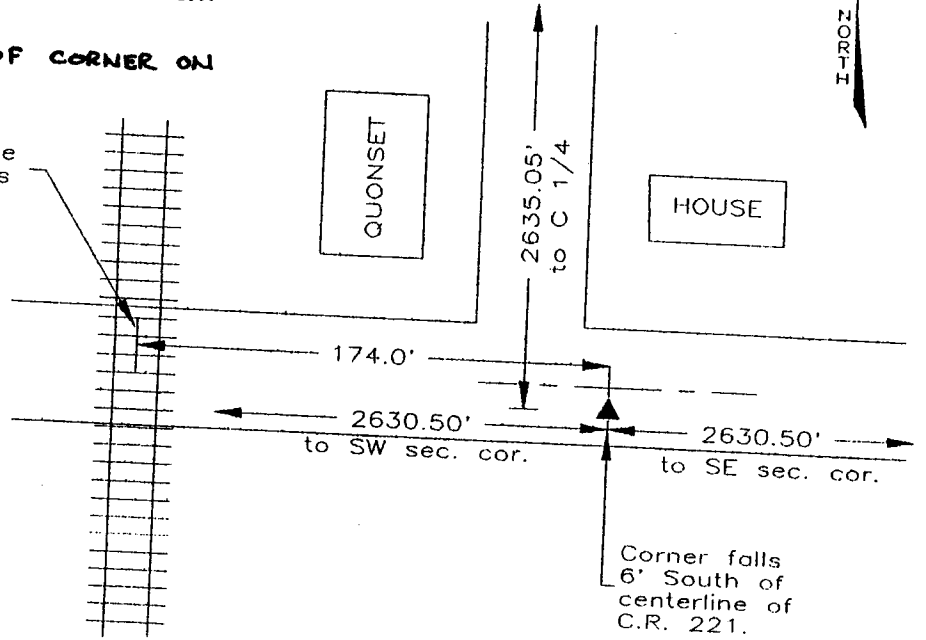
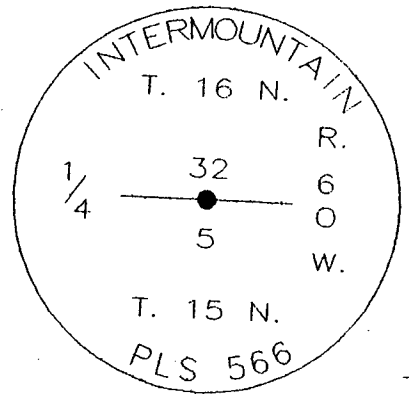
GLO Record: Granite Boulder (15" x 9" x 5")

SET 5/8" x 24" REBAR WITH ALUMINUM CAP

STAMPED W.C. 40' SOUTH OF CORNER ON

N-S CENTERLINE

Centerline of tracks



NOTE: SEE RECORDS OF SURVEY SEC 5, T15N, R60W FOR CONTROL USED AND ADDITIONAL INFORMATION

Date of Field Work: JUNE 29, 1994 Office Reference: 2747

CROSS INDEX DIAGRAM

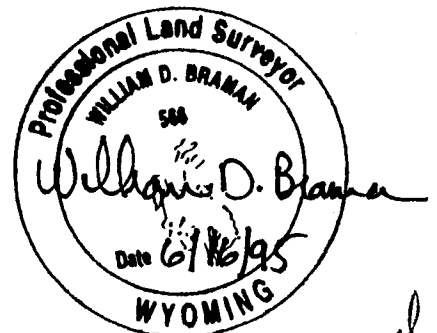
A	1	2	3	4	5	6	7	8	9	10	11	12	13	14	15	16	17	18	19	20	21	22	23	24	25
B																									
C																									
D																									
E																									
F																									
G																									
H																									
I																									
J																									
K																									
L																									
M																									
N																									
O																									
P																									
Q																									
R																									
S																									
T																									
U																									
V																									
W																									
X																									
Y																									
Z																									

Firm/Agency, Address

INTERMOUNTAIN PROFESSIONAL SERVICES, INC.
 5801 OSAGE AVENUE
 CHEYENNE WY 82001

Telephone Number: (307) 632-3138

This corner record was prepared by me or under my direction and supervision.
 SEAL & SIGNATURE



Corner Name: 1/4 32/5

Section: T 15N R 60W; 6 P.M. Cross-Index No.: A-7

BOOK 1400

16N 60W 6

2-7

*Original
 All 12/6/00*

0765